

# LORD® Anti-Friction Coatings & Flock Adhesives

SOLUTIONS FOR THE AUTOMOTIVE  
AND GENERAL INDUSTRIES



- ▲ Factory / R&D Center
- Sales & Tech Support



# Providing solutions that increase the value of our customers' products

Founded 1924, LORD has been a diversified technology leader with unique expertise in chemical material sciences and mechanical dynamics who provides innovative adhesive, coating and motion management solutions, as well as magnetically responsive technology.

Our technical expertise is built on decades of experience and knowledge in engineering and science. Customers say our technical support is one of our defining strengths.

We provide value to our customers by collaborating closely with them on product design, process engineering and product performance. Our solutions lead to reduced

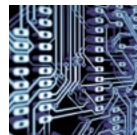
operating costs and increased productivity.

LORD Corporation is a privately-held company with world headquarters in Cary, North Carolina. Our company has regional headquarters in Geneva and Hongkong, 18 manufacturing facilities, 9 research & development centers and more than 100 strategically located sales and support centers worldwide.

Innovative and responsive to the ever-changing marketplace, LORD strongly focuses on research to bring leading-edge technology and long-term value to our customers' businesses ... Ask Us How.

## **AUTOMOTIVE**

Automotive OEM Assembly  
Tier Component Assembly  
Heat Protective Coatings · Aftermarket Repair



## **ELECTRONICS**

Component Assembly · Industrial Lighting  
Printed Electronics Industries · Energy · Protection & Conductive Materials for Automotive Microelectronics

## **TRUCK, BUS & OFF-HIGHWAY**

Agriculture  
Construction & Mining Equipment  
Material Handling · Bus and Truck

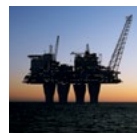


## **AEROSPACE & DEFENSE**

Active Vibration Control & Balancing Systems  
Bearings & TT Straps · Isolators & Mounts  
Dampers · Lightning Strike Protection · MRO

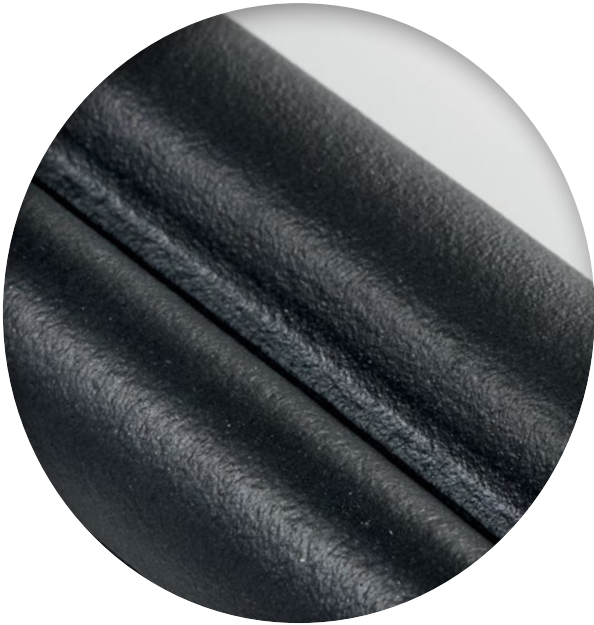
## **INDUSTRY**

Transportation · Construction Components  
Signs · Metal Working  
General Industry



## **ENERGY**

Oil & Gas  
Solar & Wind



## **SIPIOL<sup>®</sup>** **Anti-Friction Coatings**

- High abrasion resistance
- High UV stability
- Noise reduction
- One-component and two-component systems
- Water based systems
- Spray and brush
- All coatings can be over-painted
- All Coatings are NEP (N-Ethyl-Pyrrolidinone) and NMP (N-Methyl-Pyrrolidinone) free

### **Primers**

- Solvent and water based systems
- Application on a variety of elastomers
- Different activation temperatures
- Spray and brush



## **FLOCKSIL<sup>®</sup> & PARFLOCK<sup>®</sup>** **Adhesives**

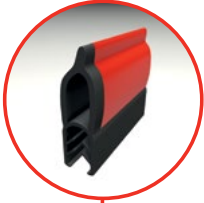
- One-component solvent based adhesives
- Different solvent compositions and curing times

### **Catalysts**

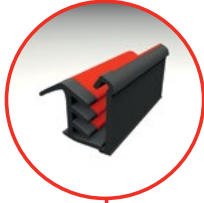
- Different curing speeds
- High efficiency

Passenger Car

Engine hood sealing



Glas run channel



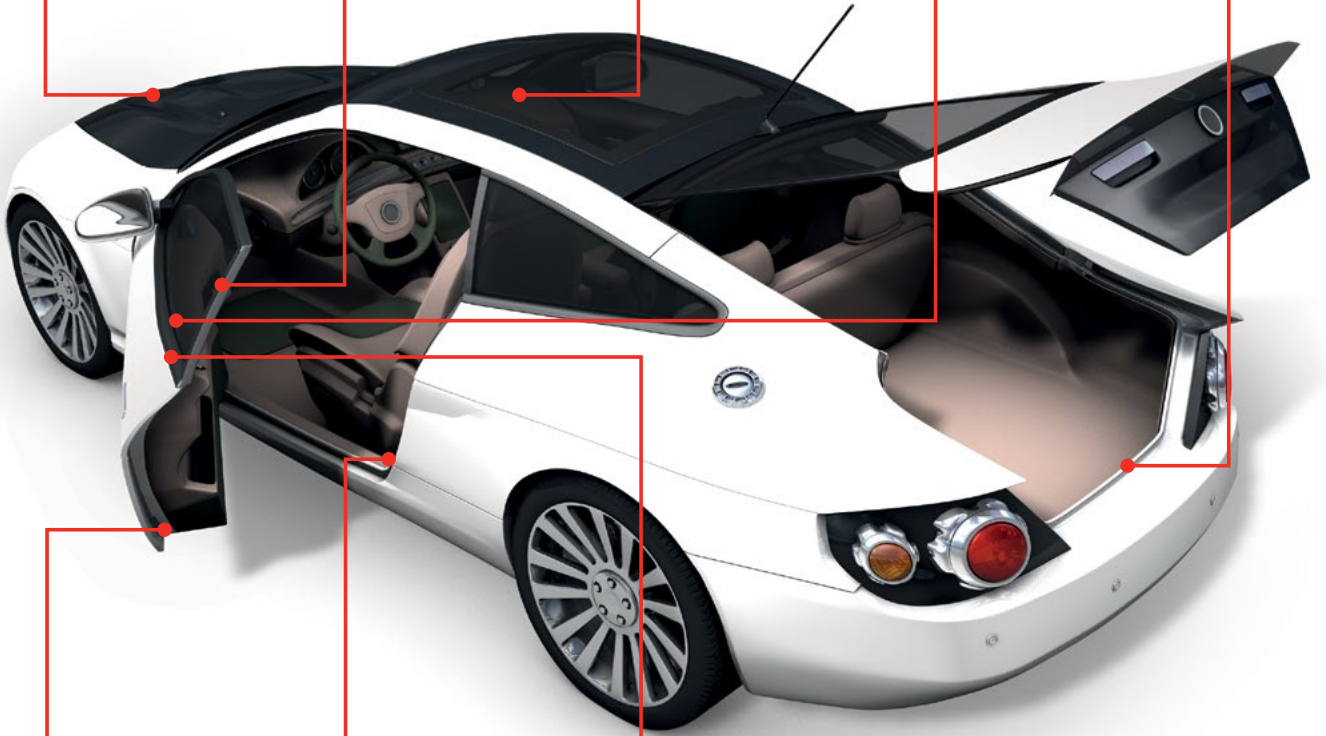
Sun roof sealing



Inner window guide



Trunk sealing



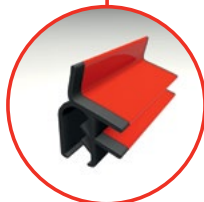
Primary door sealing



Secondary door sealing



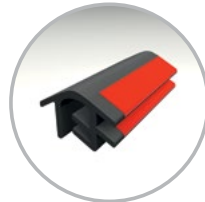
Outer window guide



*For Convertibles :*



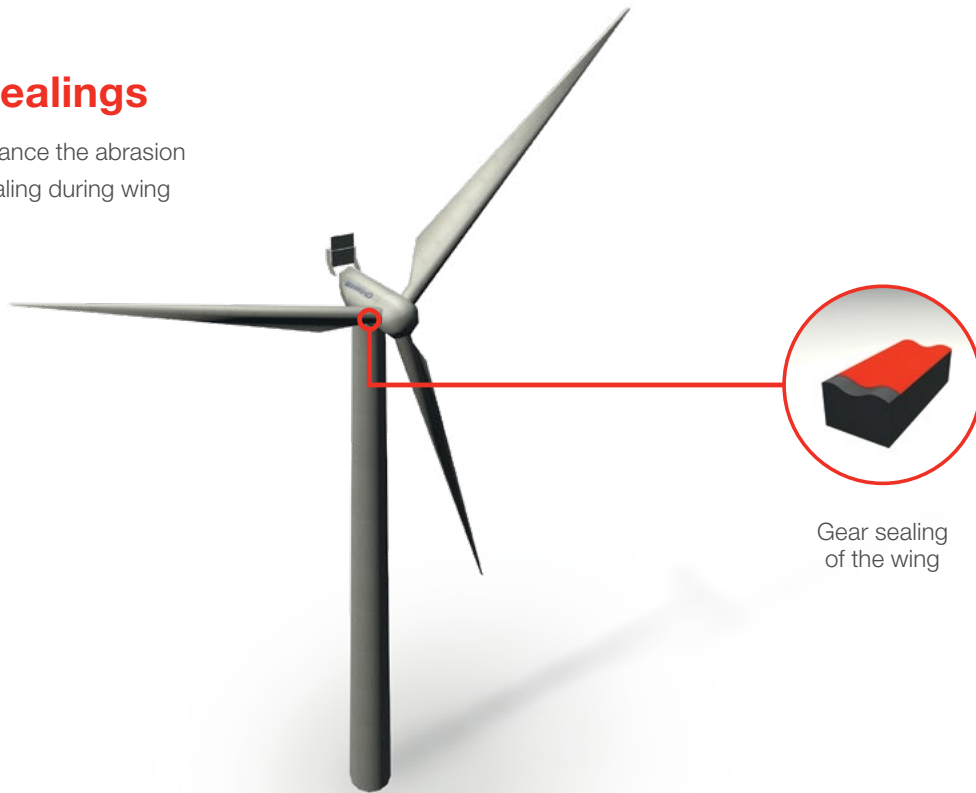
Windshield header sealing



Top case cover sealing

## Windmill sealings

LORD solutions enhance the abrasion resistance of the sealing during wing movements.



Gear sealing  
of the wing

## O-Rings

LORD solutions ensure proper setting during the installation of O-Rings.

The transparent coating allows to keep the original compound colour or to customize the O-Ring by adding colour.



Applications in  
household appliances

Applications in  
gearboxes

## SIPIOL® Anti-Friction Coatings

	Colour	Particle Size (µm)	1K/2K*	Noise	Abrasion	Weathering	COF µ	Main Application	Main Substrate	Viscosity (mPas)	Solids (W %)
<b>Sipiol® WL 1120- 21</b>	Black	No particles	1K	++	++	+++	0.3	Door sealing, trunk-bonnet, hood sealing	EPDM	10-100	30-35
<b>Sipiol® WL 1120-23</b>	Black	No particles	1K	++	+++	+++	0.3	Door sealing, trunk-bonnet, hood sealing	EPDM	10-150	31-36
<b>Sipiol® WL 1620-21</b>	Translucent	No particles	1K	++	++	n.a.	0.3	O-Rings	Coloured EPDM	10-150	31.0-36.0
<b>Sipiol® WL 2010-23</b>	Black	No particles	2K	++	++	+++	0.26	Door sealing, trunk-bonnet, hood sealing	EPDM, TPE	400-600	31-36
<b>Sipiol® WL 2015-22P</b>	Black	60	2K	+++	+++	+++	0.16	Secondary door sealing frameless doors, convertibles	EPDM, TPE	150-300	34-39
<b>Sipiol® WL 1025- 21</b>	Black	60	1K	+++	+++	+++	0.16	Secondary door sealing frameless doors, convertibles	EPDM	40-100	36.5-40.5
<b>Sipiol® WL 1625-24</b>	Translucent	60	1K	+++	+++	+	0.16	Secondary door sealing frameless doors, convertibles	EPDM	40-100	35-39
<b>Sipiol® WL 1026-21</b>	Black	30	1K	+++	+++	++++	0.16	Secondary door sealing frameless doors, convertibles	EPDM	50-150	36-40
<b>Sipiol® WM2</b>	Milky White	20	1K	+++	n. a.	n.a.	0.12	Setting aide, back side of profiles	all	5-50	10-14

\*1K = One-component, 2K = Two-component

## SIPIOL® Cross linker / Adhesion Promoter / Thickener

	Substrate	Proposed % in weight	Curing requirement (°C)	Pot-Life	Coating
<b>WV 21 Cross linker</b>	EPDM, Rubber, TPE	3 %	25-200	8h@25°C	all
<b>WV 22 Cross linker</b>	EPDM, Rubber	1K 1-3% 2K 8%	130-200	Infinite pot-life	all
<b>HV3 Adhesion promoter</b>	EPDM, Rubber, TPE	5-10% for all systems	70-200	Infinite pot-life, Can be used as primer on TPE	all
<b>TH1 Thickener</b>	EPDM, Rubber, TPE	0,2-2%	-	Infinite pot-life	all

## SIPIOL® and CUVERTIN® Primers

	Solvent	Activation Temperature (°C)	Main Substrate	Application Method
<b>Sipiol® WP 8555</b>	Water	80	Elastomer TPE injection	Brush, spray
<b>Cuvertin® X 8536</b>	Xylene	24	Elastomer TPE	Brush, spray
<b>Cuvertin® X 8568</b>	Xylene	24	Elastomer TPE	Brush, spray

## FLOCKSIL® and PARFLOCK® Flock Adhesives

	Colour	Solvent	Gel-time @ 180°C (min)	Adhesion	Abrasion	Humidity Stability	Main Substrate	Application Method	Viscosity [mPas]	Solids (W %)	Remarks
<b>Flocksil® 1501</b>	Brown	MIBK Ethyl-acetate	10	+++	+++	+++	EPDM	Inline, brush, spray	20-100	45-49	-
<b>Flocksil® 1503D</b>	Black	Xylene	1.5	++++	++++	++++	EPDM	Inline, brush, spray	35-60	41.5-45.5	-
<b>Flocksil® 1506</b>	Black	Xylene	3	+++	+++	+++	TPE	Inline, brush, spray	35-70	40-44	Coloured Flock, non-yellowing
<b>Parflock® P11</b>	Black	Xylene	5	+++	+++	+++	EPDM	Inline, brush, spray	16-22	43-49	-
<b>Parflock® P11B</b>	Black	Xylene	2.5	+++	+++	+++	EPDM, TPE	Inline, brush, spray	16-22	43-49	-

## CUVERTIN Catalyst Matrix

	Solvent	Reduction of Curing Time*	Pot Life (h)**
<b>Cuvertin K4</b>	Xylene	3/4	7
<b>Cuvertin K8</b>	Xylene	1/2	2
<b>Cuvertin K18</b>	Xylene	1/3	2

\* addition of 1% by weight catalyst    \*\* depending on temperature and humidity level

+ meets expectations ++ good +++ very good ++++ excellent
--------------------------------------------------------------------

LORD, Sipiol, Flocksil, Parflock, Cuvertin and “Ask Us How” are trademarks of LORD Corporation or one of its subsidiaries.

---

LORD provides valuable expertise in adhesives and coatings, vibration and motion control, and magnetically responsive technologies. Our people work in collaboration with our customers to help them increase the value of their products. Innovative and responsive in an ever-changing marketplace, we are focused on providing solutions for our customers worldwide ... Ask Us How.

#### EUROPEAN HEADQUARTERS

LORD Suisse Sarl  
CH-1218 Le Grand Saconnex  
Geneva  
Switzerland

#### CUSTOMER SERVICE CENTER EUROPE

LORD Germany GmbH  
Itterpark 8  
40724 Hilden  
Germany  
+49 2103 252 31 60  
info.europe@lord.com